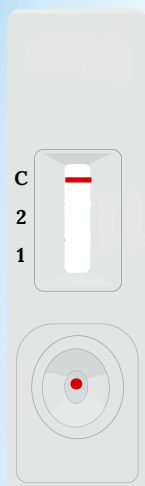
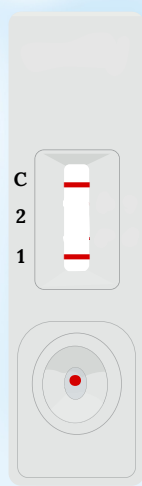
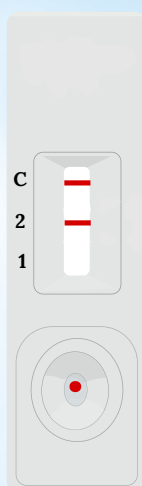
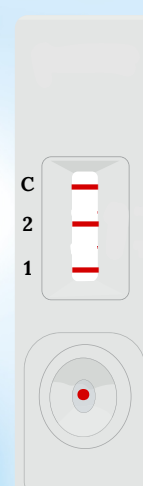
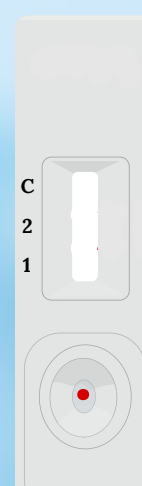


MALARIA Pf/Pv Ag TEST (Whole Blood)

INTERPRETATION OF RESULTS

Figure 1**Negative****Figure 2****Positive
P.falciparum****Figure 3****Positive
P. Vivax****Figure 4****Positive
P.falciparum + P.vivax****Figure 5****Invalid**

DIRECTIONS FOR USE

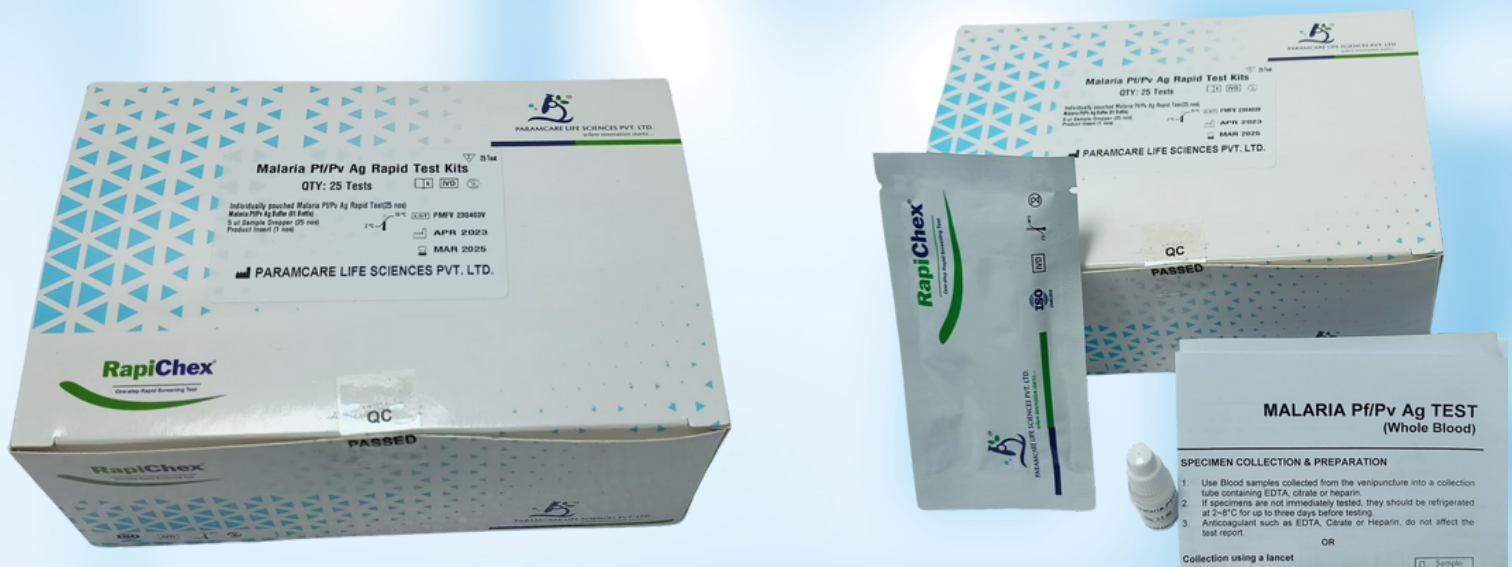
1. Wear protective gloves while handling specimens wash thoroughly afterwards.
2. The device is sensitive to humidity as well as heat. Therefore take out the device from seal pouch before test.
3. Do not mix reagents from different lot.
4. Dispose all the samples and kits properly as per the instruction after test in accordance in GLP.
5. Follow the testing procedure exactly as mention in the insert.

INTERPRETATION OF RESULTS

1. **Negative** reaction: The presence of only one band within the result window indicates a negative result.
2. **P. falciparum Positive** reaction: The presence of two color bands (C and 1) indicates a positive result for P.
3. **P. Vivax Positive** reaction: The presence of two color bands (C and 2) indicates a positive result for P. vivax.
4. **P. falciparum and other P. Vivax Positive** reaction: The presence of 3 colored bands indicate a positive result for P.
5. **Invalid**: The test is invalid if the C line does not appear. If this occurs, the test should be repeated using a new cassette.

MALARIA Pf/Pv Ag TEST (Whole Blood)

MALARIA Pf/Pv Ag Rapid TestKit



Sensitivity and Specificity

	P.f.	Pv
Sensitivity	100 %	100 %
Specificity	99.8 %	

The Malaria Pf/Pv Antigen has sensitivity of 200 parasites/ μ l of whole blood at base line. The product has been studied and tested after 60 days at room temperature, 35°C and 45°C

Corporate Office:-

C/609, 6th Floor, Mittal Commercial, Unit 2,
Hasan Pada Road, Chimatpada Marol, Andheri (E),
Mumbai - 400059.

Factory Address:-

G/F- 12/13, Evershine-2, Survey NO.
307/3/1, Balitha, N.H No 48, Vapi, Valsad,
Gujarat, 396191.