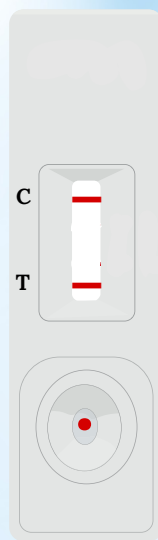


## Dengue NS1+IgG/IgM Rapid Test Kit

### INTERPRETATION OF RESULTS

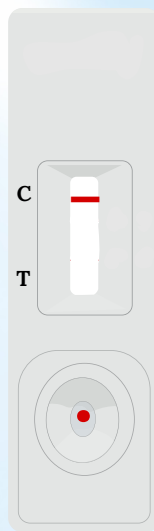
#### For Dengue NS1:

Figure 1



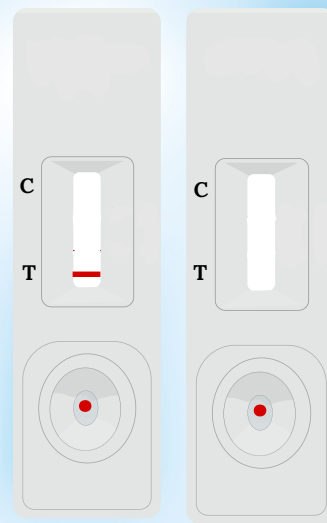
**POSITIVE**

Figure 2



**Negative**

Figure 3



**Invalid**

### DIRECTIONS FOR USE

1. Allow test device, Assay Buffer and specimen equilibrates to room temperature (15-30°C) prior to testing.
2. Remove the test device from the aluminum foil pouch and use it as soon as possible.
3. Place the test device on a clean and flat surface.  
Carefully dispense 1 drop (20 µl) of Serum/Plasma/whole blood in the sample well "S" using the dropper provided.
4. After that add 1 drop (appx. 40 µl) of Assay Buffer in the sample well "S".
5. Allow reaction to occur and read the results at 15 minutes. Do not interpret the results after 20 minutes.

### INTERPRETATION OF RESULTS

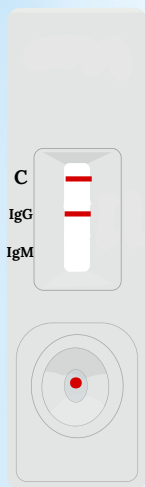
1. **Positive:** If two color lines appear, one at control region 'C' and other at test region 'T', the specimen is positive for Dengue NS1 antigen.
2. **Negative:** If only one color line appear at control region 'C' as the specimen is Negative for Dengue NS1 antigen.
3. **Invalid:** If no color line appear, at control line 'C' within the stipulated time then result is invalid.  
Repeat the test using a fresh test device.

## Dengue NS1+IgG/IgM Rapid Test Kit

### INTERPRETATION OF RESULTS

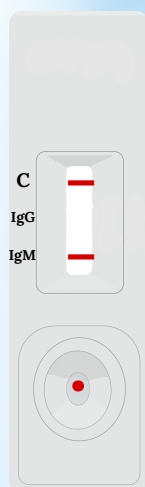
#### For Dengue IgG/IgM:

Figure 1



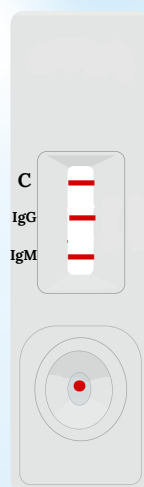
**IgG Positive**

Figure 2



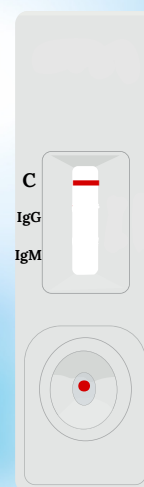
**IgM Negative**

Figure 3



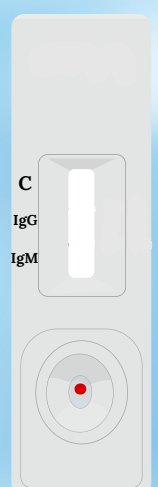
**IgG and IgM Positive**

Figure 4



**Negative**

Figure 5



**Invalid**

### DIRECTIONS FOR USE

1. Allow test device, Assay Buffer and specimen equilibrates to room temperature (15-30°C) prior to testing.
2. Remove the test device from the aluminum foil pouch and use it as soon as possible.
3. Place the test device on a clean and flat surface.  
Carefully dispense 1 drop (20 µl) of Serum/Plasma/ whole blood in the sample well "S" using the dropper provided.
4. After that add 2 drop (appx. 80 µl) of Assay Buffer in the sample well "S".
5. Allow reaction to occur and read the results at 15 minutes. Do not interpret the results after 20 minutes.

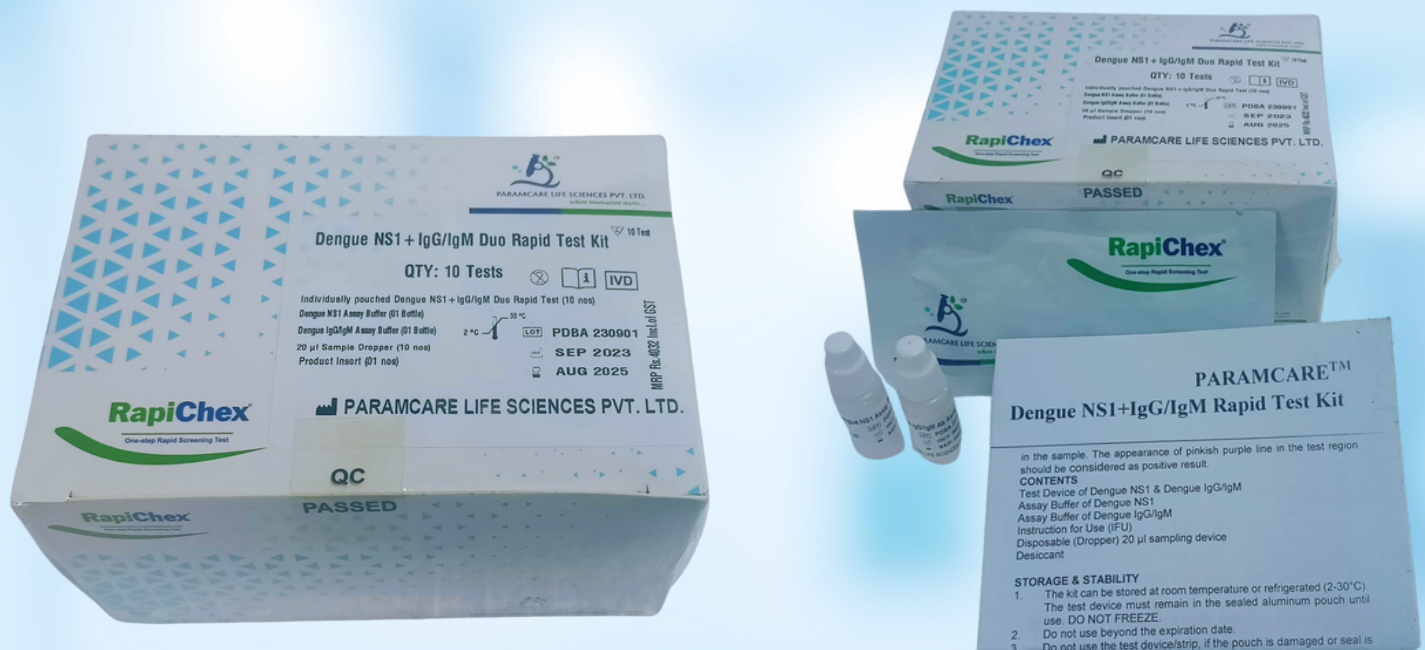
### INTERPRETATION OF RESULTS

1. **IgG Positive** : If two color lines appear, one at control region 'C' and other at test region 'G', the specimen is positive for Dengue IgG.
2. **IgM Negative** : If two color lines appear, one at control region 'C' and other at test region 'M', the specimen is positive for Dengue IgM.
3. **IgG and IgM Positive**: If three color line appear, one at control line 'C', one at test region 'G' and one at test line 'M', the specimen is positive for both Dengue IgG & IgM.
4. **Negative** : If only one color band appear at control line 'C' as the specimen is Negative for Dengue IgG & IgM infection.
5. **Invalid**: If no color band appear, at control line 'C' within the stipulated time then result is invalid.



## Dengue NS1+IgG/IgM Rapid Test Kit

### Dengue NS1+IgG/IgM Rapid Test Kit



### Sensitivity and Specificity

Specimen	Positive	Negative	Sensitivity
NS1 Positive	80	00	100 %
IgG Positive	20	00	100 %
IgM Positive	20	00	100%

Specimen	Positive	Negative	Specificity
NS1 Ag Negative	02	248	99.2%
Den IgG/IgM Negative	03	247	98.8%

#### Corporate Office:-

C/609, 6th Floor, Mittal Commercial, Unit 2,  
Hasan Pada Road, Chimatpada Marol, Andheri (E),  
Mumbai - 400059.

#### Factory Address:-

G/F- 12/13, Evershine-2, Survey NO.  
307/3/1, Balitha, N.H No 48, Vapi, Valsad,  
Gujarat, 396191.