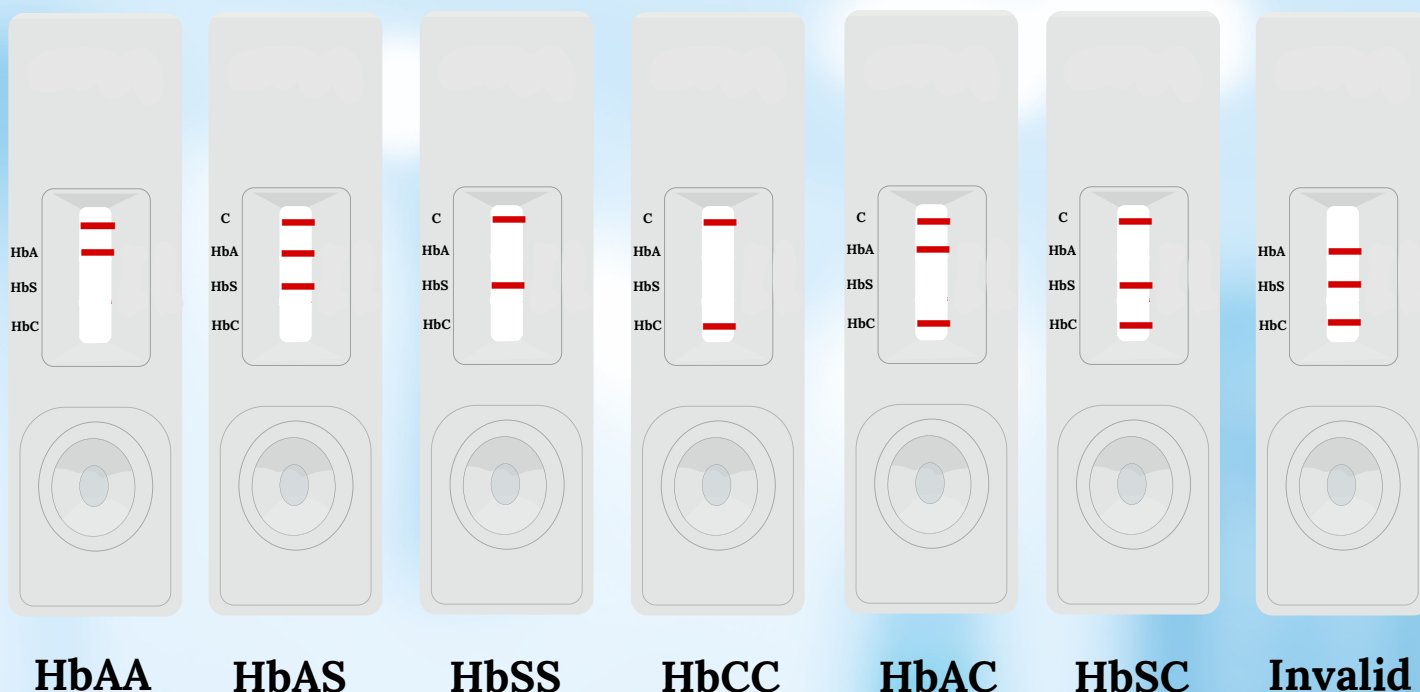


SICKLE CELL RAPID TEST KIT



DIRECTIONS FOR USE

Do not open pouch until ready to use. Prep necessary materials: Sick Cell card test | pre-Filled extraction tube and label them with patient ID.

1. Obtain 10 μ L (1 drop) of fingerstick blood specimen. Open Pre-Filled extraction tubes and insert 10 μ L into the pre-Filled extraction tube.
2. Tightly close the cap of extraction tube. Invert the extraction tube, mix few times and keep for 15-20 minutes.
3. Immediately dispense 2-3 drops into the Sick Cell card test. Remove any air bubbles in the dropper. Test on a level surface at room temperature.
4. Allow test to run for 10 minutes. Read the results of the Sick Cell by viewing the detection window. Test results that have run over 15 minutes are invalid.

The **Sick Cell Rapid Test Kit** is a lateral flow chromatographic qualitative immunoassay to aid in the rapid diagnosis of sickle cell disorders of hemoglobins A and S using fingerstick or venipuncture whole blood samples.

Sickle Cell Inheritance

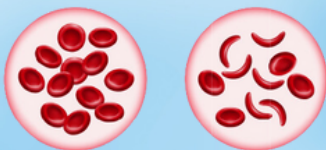


SICKLE CELL RAPID TEST KIT

SICKLE CELL RAPID TEST KIT



Sensitivity and Specificity



| | SS | AS | AA | AC | CC | Total |
|-------------|----------|----------|----------|------|----------|-------|
| Clinical SS | 10 | 0 | 0 | 0 | 0 | 10 |
| Clinical AS | 0 | 10 | 0 | 0 | 0 | 10 |
| Clinical AC | 0 | 0 | 0 | 10 | 0 | 10 |
| Clinical CC | 0 | 0 | 0 | 0 | 10 | 10 |
| Clinical AA | 0 | 0 | 80 | 0 | 0 | 80 |
| Total | 10 | 10 | 80 | 10 | 10 | 120 |
| Specificity | >99 % | >99 % | >99 % | >99% | >99 % | >99% |
| Sensitivity | >99 % | >99% | >99% | >99% | >99 % | >99% |

Sickle Cell Trial was done using RapiChex Sickle Cell Rapid Test from Paramcare Life Sciences at Bardoli Camp with 100% Sensitivity and Specificity.

Corporate Office:-

C/609, 6th Floor, Mittal Commercial, Unit 2,
Hasan Pada Road, Chimatpada Marol, Andheri (E),
Mumbai - 400059.

Factory Address:-

G/F- 12/13, Evershine-2, Survey NO.
307/3/1, Balitha, N.H No 48, Vapi, Valsad,
Gujarat, 396191.